

PART OF THE SW.1/4, OF SECTION 21, T.6N., R.2W., S.L.B. & M.

452

DAYBREAK SUBDIVISION

IN WEBER COUNTY

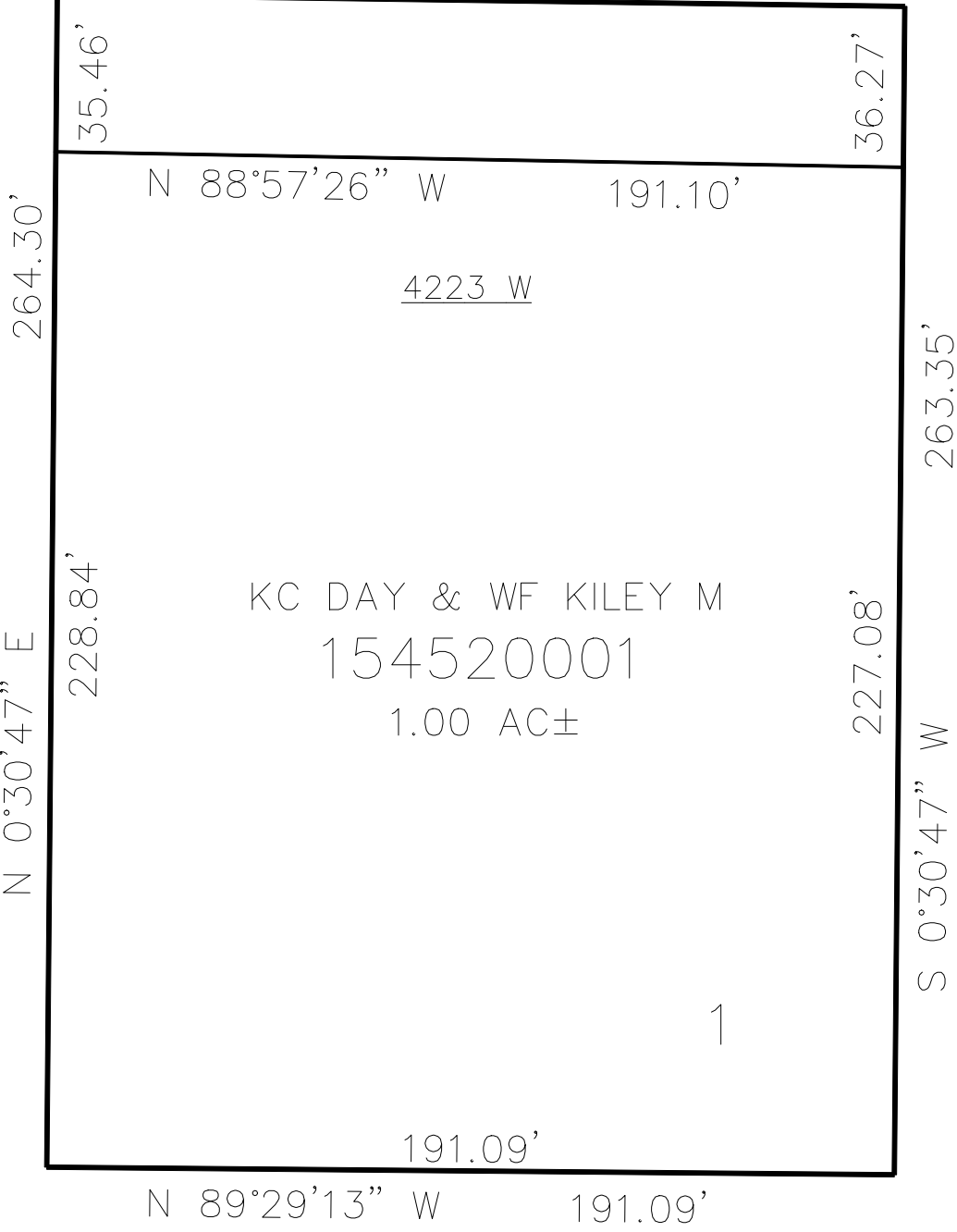
TAXING UNIT: 516

SCALE 1" = 40'

SEE PAGE 59

1400 SOUTH ST.

S 89°12'03" E 191.09'



10' UTILITY & DRAINAGE EASEMENTS EACH
SIDE OF PROPERTY LINES AS INDICATED
BY DASHED LINES EXCEPT AS OTHERWISE
SHOWN.

FOR COMPLETE ENG DATA SEE
ORIGINAL DEDICATION PLAT IN
BOOK 67, PAGE 5 OF RECORDS.